

# *Acanthopanax senticosus* Protects Against Myocardial Ischemia Reperfusion Injury in Rats

HONGYING WU<sup>1</sup> AND MIN ZHANG<sup>2\*</sup>

<sup>1</sup>Geriatrics Department, <sup>2</sup>Outpatient Department, Sichuan Academy of Medical Sciences, Sichuan People's Hospital, West Second Section of The First Ring Road 32, Chengdu, 610072, China

## Wu *et al.*: *Acanthopanax senticosus* and Myocardial Ischemia Reperfusion Injury in Rats

The protective effects of *Acanthopanax senticosus* on myocardial ischemia reperfusion injury in rats was explored. A total of 60 male Sprague Dawley rats were randomly divided into the sham operated group (group C), the ischemia reperfusion group (group IR), the *Acanthopanax senticosus* plus blocker group (group ASS+Z), and the *Acanthopanax senticosus* group (group ASS). The rat myocardial ischemia reperfusion injury models were established through ligating left anterior descending branches of coronary artery in rats. TUNEL assay and Western Blot was used to detect the apoptotic index of myocardial cells and the expression levels of extracellular regulating kinase 1/2 (ERK1/2) and phosphorylation ERK1/2 (p-ERK1/2). Meanwhile, a total of 30 rats were randomly selected and divided into 5 groups; the control group (group c) was the simple ischemia reperfusion group, while groups P1, P2, P3, and P4 were given different dosage concentrations of *Acanthopanax senticosus* for pre-adaptation. The Langendorff isolated heart perfusion model was used to record the dynamic changes in cardiac functions and coronary artery flow in each group. The results have shown that the *Acanthopanax senticosus* had certain protective effects on the ischemia reperfusion injury of rat myocardium, as well as the pre-adaptive effects on the systolic functions of left ventricles after reperfusion, which would increase coronary flow and resist the arrhythmia, thereby reducing the apoptosis rates of myocardial cells and protecting the myocardium through activating the ERK1/2 pathway.

**Key words:** *Acanthopanax senticosus*, reperfusion injury, myocardial cell apoptosis, troponin, myocardial ischemia

Myocardial infarction is one of the major diseases that threaten human health<sup>[1,2]</sup>. With the clinical application of reperfusion treatments such as percutaneous coronary intervention, thrombolytic therapy and coronary artery bypass grafting, although the myocardium blood supply of patients has been recovered, myocardial ischemia reperfusion injury (MI/RI) would still occur<sup>[3,4]</sup>. MI/RI is the severe pathophysiological changes of ischemic myocardium after reperfusion treatment, the programmed myocardial cell deaths caused by MI/RI often considered to be necrosis<sup>[5]</sup>. However, research has shown that apoptosis occurs in MI/RI as well, whose development is regulated by various genes; in addition, based on the comprehension of ischemia pre-adaptation protection mechanism, the myocardial pharmacological pre-adaptation mechanism has been proposed<sup>[6]</sup>.

Myocardial pharmacological pre-adaptation refers to

the process of stimulating or simulating the organism to release protective substances thereby protecting the myocardium through simulation of myocardium ischemia by directly or indirectly functioning on signal transduction pathways. *Acanthopanax senticosus* (ASS) whose major active component is the root and vine, is also known as manyprickle acanthopanax. Published reports showed that root and vine of manyprickle acanthopanax could simulate the pre-adaptation of myocardial ischemia, which would have certain protective functions on MI/RI. Opening of ATP-dependent potassium ion channel is one of the key mechanisms of ASS is to cause pharmacological pre-adaptation. The ATP-dependent potassium ion channel is an important effector of the transduction pathway of ischemia pre-adaptation signals<sup>[7]</sup>.

However, discussions on the protective effects of the root and vine of manyprickle acanthopanax on

\*Address for correspondence  
E-mail: zhangminscph@126.com

myocardium are limited to its mechanisms, while the translation to clinical application are rarely investigated. Therefore, the protective effects of the root and vine of manyprickle *acanthopanax* on myocardial ischemia and reperfusion were investigated and the dose-effect relationship was explained for translation to clinical treatment of heart ischemic diseases.

## MATERIALS AND METHODS

A total of 60 healthy male SD rats (weighing 250  $\pm$ 20 g) were randomly divided into 4 groups, with 15 rats in each group and the treatment chosen was *acanthopanax senticosus* (ASS). The reagents used were the extracellular regulating kinase (ERK) 1/2 reagent kit, the KeyGEN TUNEL apoptosis *in situ* detection kit, and the protein kinase B kit. Equipment used was the automatic biochemical detector, the HC-3018 high-speed refrigerated centrifuge, the MCE-1000 electrocardiograph (ECG) monitor, and the DH-150 animal ventilator. Rats in the sham-operated group were given thoracotomy without ligation; while rats in the other 3 groups were given thoracotomy and ligated to establish the myocardial infarction model.

### Myocardial ischemia and reperfusion:

The specific treatment processes used were, rats in group C (the sham-operated group) were subjected to thoracotomy to expose their hearts and no other interventions were made. Rats in the ischemia reperfusion group (IR group) had left anterior descending coronary artery branches ligated with threads, and the knots were released after 30 min of ischemia, followed by 120 min of reperfusion. Rats in the ASS+Z group were injected with 60 mg/kg of ASS intraperitoneally, then subjected to thoracotomy to ligate left anterior descending coronary artery branch with a thread, after 30 min of ischemia, the rats were intravenously administered LY294002, following which and the ligation was released for 120 min of reperfusion, rats in the ASS group were injected with 60 mg/kg of ASS intraperitoneally, following that the coronary artery ligation and reperfusion process were performed as described above.

After completing myocardial ischemia and reperfusion, hearts were immediately excised, rinsed with 0.9 % sodium chloride and blotted dry. Left ventricles and the interventricular septa were kept. Rat myocardium from the cardiac apex to the ventricular base was cut into 2 mm-thick tissue slices, which were placed into the NBT (0.5 g/l) solution for staining in a thermostatic

water bath at 37°; 15 min later, the tissue pieces were taken out, rinsed and dried. The infarcted myocardium was unstained, while the normal myocardium was stained violet-blue. The proportion of the weight of the infarcted myocardium to the total weight of the left ventricle was calculated to determine the extent of myocardial infarction.

### TUNEL and Western blot:

The TUNEL assay was used to determine the apoptotic index (AI). Rat hearts were removed after MI/RP and the ischemic myocardium was cut and fixed with 10 % neutral formaldehyde for 48 h, the myocardium was embedded with regular paraffin and the terminal deoxynucleotidyl transferase dUTP nick end labeling (TUNEL) assay was performed. Under the optical microscope, the nuclei of normal myocardial cells were in the color of bluish green, while the nuclei of apoptotic cells were in the various shades of brown. Three sections of each rat heart were selected and 5 high power fields (HPF) per each section in the distribution area of apoptotic cells, the average number of apoptotic cells out of 100 cells were calculated, and the AI was expressed as percent.

The Western Blot assay was used to detect the expression in ERK1/2 and phosphorylation ERK (p-ERK) 1/2. A total of 0.1 g of frozen myocardial tissue was added to 1 ml of protein extraction liquid, homogenized, protease inhibitor was added in the ratio of 1:100 and supernatant was obtained after centrifugation. Coomassie Brilliant Blue assay was used to determine the volume of protein, which was 3 g/l, and the supernatant was kept at -80°. The supernatant was used for electrophoresis and membrane transfer, blocked for 120 min with 5 % skimmed milk powder at 37°. Following these steps, diluted mouse antirat p-ERK1/2 monoclonal antibody was added in the ratio of 1:800 for hybridization and kept overnight at 4°. The membrane was then washed thrice with TBST washing solution, 1:1000 diluted goat antimouse second antibody, incubated for 120 min at 37°, washed thrice with TBST washing solution, filtered and allowed to dry. The chemiluminescence reagent kit was used in accordance with the specifications of Western Blot kit, and the corresponding absorbance values were recorded.

### Langendorff Isolated Heart Perfusion:

A total of 30 adult male SD rats (250-300 g) were selected and randomly divided into 5 groups, the control group (group C), the ASS pre-adaptation groups exposed to

30, 40, 60 and 80 mg/kg respectively (groups P1, P2, P3, and P4) with 6 rats in each group.

The rats were heparinized, and anesthetized with 1% sodium pentobarbital administered intraperitoneally, the hearts were quickly removed and placed in 4° calcium-free Krebs Hansleit (K-H) solution to stop beating. The aorta was slightly trimmed, and connected to the Langendorff perfusion devices within 3 s and perfused with 95% CO<sub>2</sub> and 5% CO<sub>2</sub> saturated K-H buffer (pH 7.4) made up of NaCl 120 mM, KCl 4.7 mM, CaCl<sub>2</sub> 2.25 mM, KH<sub>2</sub>PO<sub>4</sub> 1.18 mM, MgSO<sub>4</sub>·7H<sub>2</sub>O 1.2 mM, NaHCO<sub>3</sub> 24.5 mM, glucose 11.1 mM and ethylenediaminetetraacetic acid 0.03 mM. The perfusion pressure was kept at 75 cm H<sub>2</sub>O. Each left auricular appendix was cut open and a catheter with a balloon connected to a biological signal recorder was inserted into the left ventricle; the heart was immediately placed in the 39° thermal container. After the cardiac beating was restored and stable, the balloon was slowly inflated with 0.9 % sodium chloride solution, and the left ventricle end diastolic pressure was regulated to 4-10 mmHg. The T-directions of isolated hearts were changed and the constant current mode was shifted to constant voltage mode for perfusion. After 15 min of balance, group C was continued to be perfused with K-H solution for 10 min; then, the perfusion of all heart was paused for 25 min, and the perfusion was continued for another 30 min; in terms of groups P1, P2, P3, and P4, after 15 min of balance, they were perfused for 10 min with K-H solution that contained required concentrations of ASS and the followed treatment processes of ischemia and reperfusion were the same as in group C. Once the constant pressure perfusion was balanced, the hearts whose heart rate (HR) was <200 beats per minute and the left ventricular diastolic pressure was < 75 mmHg with at least 2 premature systoles per minute were discarded. The continuous ventricular fibrillation that lasted over 5 min during the ischemia or reperfusion indicated myocardial death.

Once the above processes were finished, the indicators were observed. The MP150 16-pathway physiological signal record and analysis system was applied to record the left ventricle end diastolic pressure (LVEDP) with 30 min of balance end and reperfusion, the left ventricle diastolic pressure (LVDP), the maximal rate of contraction of left ventricular pressure (+dp/dt max), and the maximal rate of relaxation of LVEDP (-dp/dt max), in addition, the coronary artery outflow (ml/min) at the above nodes were collected.

The SPSS 10.0 statistics software was applied to analyze

the research results of both experiments; all the data were expressed as mean±standard deviation. The group comparisons were analyzed by one-way ANOVA, and P<0.05 indicated the statistical significances of the differences.

## RESULTS AND DISCUSSION

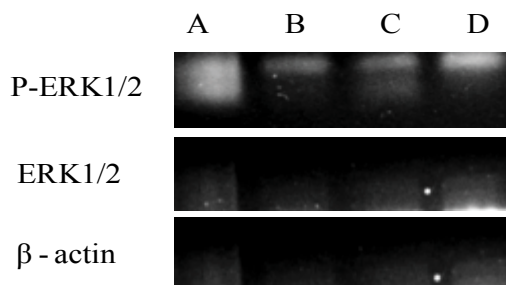
Compared to the IR group and the ASS+Z group, the effects of ASS on the extent of myocardial infarction were mainly manifested as a decrease of both the infarcted myocardium weights and the proportion of infarcted myocardium to total left ventricle mass in the ASS group, as shown in fig. 1.

Compared with the IR group and ASS+Z group, the effects of ASS on serum cardiac troponin T (cTnT) and myocardial cell apoptosis were mainly manifested as a significant decrease of cTnT and AI. However, the levels of cTnT and AI in the ASS group were still higher than that in group C. The comparisons of cTnT and AI values of rats in all 4 groups is shown in Table 2.

Compared to groups C, IR and ASS+Z, the effects of ASS on ERK1/2 signal transduction pathway were

**TABLE 1: SIZE AND WEIGHT OF MYOCARDIAL INFARCTION IN 3 GROUPS**

Group (n=15)	Infarction size (g)	Left ventricle size (g)	Infarction size/ left ventricle size (%)
IR	0.82±0.031	2.23±0.12	36.78±3.31
ASS+Z	0.75±0.041	2.21±0.09	35.28±2.14
ASS	0.67±0.032 <sup>bc</sup>	2.20±0.12	29.21±1.94 <sup>bc</sup>



**Fig. 1: Expression of ERK1/2 and p-ERK1/2 in various groups**

Expression levels of ERK1/2 and p-ERK1/2 in the A. C group, B. IR group, C. ASS+Z group and D. ASS group.

**TABLE 2: SERUM CTNT AND AI LEVELS IN 4 GROUPS**

Group (n=15)	cTnT (µg/l)	AI (%)
C (A)	1.26±0.35	2.28±1.06
IR (B)	5.20±0.42	27.50±5.24
ASS+Z (C)	4.02±0.37	21.12±3.72
ASS (D)	2.95±0.26 <sup>abc</sup>	12.06±0.66 <sup>abc</sup>

<sup>a</sup>p<0.05, vs C group; <sup>b</sup>p<0.05, vs IR group; <sup>c</sup>p<0.05, vs ASS+Z group

mainly manifested as higher expression levels of p-ERK1/2 in the ASS group; the changes in RD of ERK1/2 of each group were unapparent; the RD of p-ERK1/2 in ASS group was significantly higher than that in group C, group IR, and group ASS+Z. Results were indicated in fig. 1 and Table 3.

The effects of ASS on the systolic and diastolic functions of isolated hearts were mainly evidenced by that the differences between LVEDP, LVDP, +dp/dt max, and -dp/dt max of the 5 groups were not statistically significant (the F values were respectively 1.11, 2.27, 2.02, and 1.32,  $P > 0.05$ ). After 30 min of reperfusion, the differences between LVDP, +dp/dt max, and -dp/dt max of the 5 groups were statistically significant (the F values were respectively 7.8, 32.65, and 42.3,  $P < 0.05$ ). In addition, the differences between LVDP of groups P2 and P3 and group c were statistically significant (the q values were respectively 8.01 and 6.73,  $P < 0.05$ ); the differences between +dp/dt max of groups P2 and P3 and group c were statistically significant (the q values were respectively 9.92 and 4.11,  $P < 0.05$ ); the differences between -dp/dt max of groups P2 and P3 and group c were statistically significant (the q values were respectively 6.51 and 3.52,  $P < 0.05$ , as shown in Table 4).

**TABLE 3: EXPRESSION OF P-ERK1/2, ERK1/2 (RD), AND P-ERK1/2 (RD) IN 4 GROUPS**

Group (n=15)	p-ERK1/2	ERK1/2 (RD)	p-ERK1/2 (RD)
C	$(0.32 \pm 0.05) \times 10^4$	$0.43 \pm 0.04$	$0.16 \pm 0.02$
IR	$(0.41 \pm 0.06) \times 10^4$	$0.45 \pm 0.04$	$0.22 \pm 0.05$
ASS+Z	$(0.61 \pm 0.09) \times 10^4$	$0.46 \pm 0.06$	$0.32 \pm 0.04$
ASS	$(1.13 \pm 0.14) \times 10^4^{abc}$	$0.46 \pm 0.04^{cde}$	$0.55 \pm 0.66^{abc}$

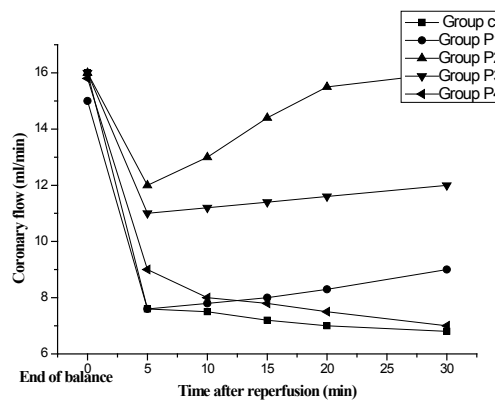
<sup>a</sup> $p < 0.05$ , vs group C; <sup>b</sup> $p < 0.05$ , vs IR group; <sup>c</sup> $p < 0.05$ , vs ASS+Z group; <sup>c</sup> $p > 0.05$ , vs group C; <sup>d</sup> $p > 0.05$ , vs IR group; <sup>e</sup> $p > 0.05$ , vs ASS+Z group

**TABLE 4: CHANGES OF HEART FUNCTION AT THE END OF STABILIZATION AND 30 MINUTES AFTER REPERFUSION**

Group	Quantity	LVEDP (mm Hg)	LVDP (mm Hg)	+dp/dt max (mm Hg/s)	-dp/dt max (mm Hg/s)
End of balance					
Group c	5	$6 \pm 1.6$	$83 \pm 2.6$	$1788 \pm 82$	$1426 \pm 2103$
Group P1	5	$6.5 \pm 1.8$	$82 \pm 4.1$	$1800 \pm 121$	$1506 \pm 135$
Group P2	5	$5.9 \pm 1.7$	$82 \pm 4.2$	$1710 \pm 110$	$1433 \pm 210$
Group P3	5	$7 \pm 1$	$80 \pm 4.1$	$1773 \pm 82$	$1332 \pm 90$
Group P4	5	$7.6 \pm 1.6$	$81.8 \pm 2.5$	$1801 \pm 107$	$1445 \pm 187$
30 minutes after reperfusion					
Group c	5	$45 \pm 18$	$42 \pm 14.5$	$515 \pm 123$	$486 \pm 80$
Group P1	5	$38 \pm 13$	$44 \pm 22$	$524 \pm 87$	$505 \pm 82$
Group P2	5	$38.2 \pm 14.2$	$55 \pm 10$	$906 \pm 71$	$647 \pm 35$
Group P3	5	$36.2 \pm 7.3$	$53 \pm 7.1$	$679 \pm 60$	$587 \pm 61$
Group P4	5	$32 \pm 10$	$36 \pm 24$	$295 \pm 187$	$218 \pm 153$

The pre-adaptive effects of ASS on coronary artery flow of isolated hearts were mainly evidenced by the statistical significances between the coronary artery flows of the 5 groups at each time point (5, 10, 15, 20, and 30 min) after reperfusion ( $F: 54.60, P < 0.05$ ); the differences between coronary flows groups P2 and P3 and group c at each time node of were statistically significant (the g values were respectively 4.62 and 3.62,  $P < 0.01$ ), the differences between coronary flows groups P1 and P4 and group c at each time node of were NSS (the g values were respectively 1.41 and 1.31,  $P > 0.05$ , as shown in fig. 2)

The manyprickle acanthopanax belongs to the Araliaceae family; its root and vine have the effects of promoting blood circulation and stopping the pain, which could dilate the blood vessels and improve the vascular circulations; the active component is the extracted ASS<sup>[8]</sup>. It was found through TUNEL assay and Western Blot that compared with the IR group and the ASS+Z group, the area of myocardial infarction in the ASS group was significantly smaller, indicating that ASS could reduce the area of myocardial infarction in



**Fig. 2: Changes of CF at the end of stabilization and after reperfusion.**

rat MI/AI models; meanwhile, the protein expression levels of p-ERK1/2 in the ASS group were obviously increased compared with the IR group and the ASS+Z group, proving that the ASS could reduce the myocardial cell apoptosis through activating the ERK1/2 pathway to protect the myocardium.

In addition, further research was also performed for the better clinical application. The Langendorff Isolated Heart Perfusion Model was applied. Research results showed that the improvements of LVDP, +dp/dt max, and -dp/dt max in groups P2 and P3 were all better than that in group C. The results have proved the pre-adaptive effects of ASS on strengthening the systolic and diastolic functions of the left ventricle after reperfusion; however, different dosage concentrations had different dose-effect relationships, in which the protective effects of 40 mg/kg ASS and 60 mg/kg ASS on myocardial ischemia reperfusion injuries of rat isolated hearts were the strongest.

It has been proved that the ASS has certain protective effects on the myocardium, which could reduce the apoptosis of myocardial cells; its active mechanism is related to the activation of ERK1/2 kinase pathway. Besides, ASS also has pre-adaptive effects on ischemia reperfusion myocardium, which could reduce the reperfusion injuries of vessels and the damages to myocardial systolic and diastolic functions caused by myocardial ischemia reperfusion, thereby reducing the occurrence of reperfusion arrhythmia.

The reduction of reperfusion arrhythmia under the impacts of ASS could have involved the following mechanisms. First, the reduction of free radical would increase the activity of the anti-oxidant enzyme to reduce the vulnerability of arrhythmia. Second, the ability to resist injuries from free radical of myocardial cells is increased, thereby the overload of  $Ca^{2+}$  in myocardial cell and the irreversible injuries of the myocardial cell are reduced. In addition, the increase of coronary artery flows under the impacts of ASS could have involved the following mechanisms; first, the ASS could remove the free radicals to reduce the generation of lipid peroxides; second, the ASS could reduce the endothelin and angiotensin II secreted by endogenous vascular active substances and correct the imbalance

of prostacyclin/thromboxane A<sub>2</sub>, thereby causing the diastole of coronary artery.

In summary, numerous experiments have proved the effects of traditional Chinese medicine (TCM) on protecting vascular endothelial functions, improving the hemodynamics, and reducing the ischemia reperfusion injuries, etc. Based on the TCM theories, as well as combining the modern scientific research methods, the protective effects of ASS on MI/RI has been investigated, and its mechanism has been explored, which is of great significance for the prevention and treatment of coronary heart diseases and the development of clinically effective drugs for reducing MI/RI.

## REFERENCES

1. Dong Q, Lin X, Shen L. The protective effect of herbal polysaccharides on ischemia-reperfusion injury. *Int J Biol Macromol* 2016;92:431-40.
2. Guan S, Ma J, Chu X. Effects of Total Flavones from *Acanthopanax senticosus* on L-type Calcium Channels, Calcium Transient and Contractility in Rat Ventricular Myocytes[J]. *Phytotherapy Res* 2015;29(4):533-39.
3. Magalhães P, Mateus P, Carvalho S. Relationship between treatment delay and type of reperfusion therapy and mechanical complications of acute myocardial infarction. *Eur Heart J Acute Cardiovasc Care* 2016;5(5):468-74.
4. Bice JS, Jones BR, Chamberlain GR. Nitric oxide treatments as adjuncts to reperfusion in acute myocardial infarction: a systematic review of experimental and clinical studies. *Basic Res Cardiol* 2016;111(2):23.
5. Zhou AY, Song BW, Fu CY. *Acanthopanax senticosus* reduces brain injury in mice exposed to low linear energy transfer radiation. *Biomed Pharmacother* 2018; 99:781-90.
6. Li PK, Gong X, Kuang G. Sesamin protects against renal ischemia reperfusion injury by promoting CD39-adenosine-A<sub>2</sub>AR signal pathway in mice. *Am J Transl Res* 2016;8(5):2245.
7. Xie JH, Jin ML, Morris GA. Advances on bioactive polysaccharides from medicinal plants. *Crit Rev Food Sci Nutr* 2016;56(sup1):S60-S84.
8. Panossian A. Understanding adaptogenic activity: specificity of the pharmacological action of adaptogens and other phytochemicals. *Ann N Y Acad Sci* 2017;1401(1):49-64.

This is an open access article distributed under the terms of the Creative Commons Attribution-NonCommercial-ShareAlike 3.0 License, which allows others to remix, tweak, and build upon the work non-commercially, as long as the author is credited and the new creations are licensed under the identical terms

This article was originally published in Special issue on "Trends in therapeutic Management of Various Conditions" *Indian J Pharm Sci* 2020;82(3) spl issue 6;xx-xx