

Indian Journal of Pharmaceutical Sciences

Scientific Publication of the Indian Pharmaceutical Association

Indexed in Ind MED, EMBASE/Excerpta Medica, International Pharmaceutical Abstracts, Chemical Abstracts.

Volume 70

Number 1

January-February 2008

CONTENTS

REVIEW ARTICLES

A Decision Tree for Rapid Quality Assurance and Control of Rifampicin-Containing Oral Dosage Forms for Global Distribution for Tuberculosis Treatment

Y. ASHOKRAJ, SHRUTIDEVI AGRAWAL AND R. PANCHAGNULA 1-4
SWATI RAWAT, SUDHA VENGURLEKAR, B. RAKESH, S. JAIN, G. SRIKARTI 5-10

RESEARCH PAPERS

In vivo Evaluation of Single Dose Tetanus Toxoid Vaccine Formulation with Chitosan Microspheres

R. MANIVANNAN, S. A. DHANARAJ, Y. UDAYA BHASKARA RAO, A. BALASUBRAMANIAM, N. L. GOWRISHANKAR, N. JAWAHAR AND S. JUBIE 11-15

Ionic Cross-linked Chitosan Beads for Extended Release of Ciprofloxacin: *In vitro* Characterization

A. SRINATHA, J. K. PANDIT AND S. SINGH 16-21

Design and Optimization of Diclofenac Sodium Controlled Release Solid Dispersions by Response Surface Methodology

H. N. SHIVAKUMAR, B. G. DESAI AND G. DESHMUKH 22-30

Evaluation of Free Radical Scavenging Activity of an Ayurvedic Formulation, *Panchvalkala*

SHEETAL ANANDJIWALA, M. S. BAGUL, M. PARABIA AND M. RAJANI 31-35

Validation of Different Methods of Preparation of *Adhatoda vasica* Leaf Juice by Quantification of Total Alkaloids and Vasicine

S. SONI, SHEETAL ANANDJIWALA, G. PATEL AND M. RAJANI 36-42

Formulation and Characterization of Mucoadhesive Buccal Films of Glipizide

MONA SEMALTY, A. SEMALTY AND G. KUMAR 43-48

Synthesis, Antimicrobial and Anti-inflammatory Activity of 2,5-Disubstituted-1,3,4-oxadiazoles

G. NAGALAKSHMI 49-55

Ascorbic Acid Inhibits Development of Tolerance and Dependence to Opiates in Mice: Possible Glutamatergic or Dopaminergic Modulation

S. K. KULKARNI, C. DESHPANDE AND A. DHIR 56-60

Design and *In Vitro* Characterization of Buccoadhesive Drug Delivery System of Insulin

J. SAHNI, S. RAJ, F. J. AHMAD AND R. K. KHAR 61-65

Development and Evaluation of a Chloramphenicol Hypertonic Ophthalmic Solution

A. V. JITHAN, C. KRISHNA MOHAN, AND M. VIMALADEVI 66-70

Optimization of Fast Dissolving Etoricoxib Tablets Prepared by Sublimation Technique

D. M. PATEL AND M. M. PATEL 71-76

Furosemide-loaded Alginate Microspheres Prepared by Ionic Cross-linking Technique: Morphology and Release Characteristics

M. K. DAS AND P. C. SENAPATI 77-84

SHORT COMMUNICATIONS

Isolation of Liver Aldehyde Oxidase Containing Fractions from Different Animals and Determination of Kinetic Parameters for Benzaldehyde

R. S. KADAM AND K. R. IYER 85-88

Microwave-Induced Synthesis of Schiff Bases of Aminothiazolyl Bromocoumarins as Antibacterials

K. N. VENUGOPALA AND B. S. JAYASHREE 88-91

In vitro Antiviral Activity of some Novel Isatin Derivatives against HCV and SARS-CoV Viruses

P. SELVAM, N. MURGESH, M. CHANDRAMOHAN, E. DE CLERCQ, E. KEYAERTS, L. VIJGEN, P. MAES, J. NEYTS AND M. V. RANST 91-94

Physicochemical and Pharmacokinetic Parameters in Drug Selection and Loading for Transdermal Drug Delivery

N. S. CHANDRASHEKAR AND R. H. SHOBHA RANI 94-96

HPLC Estimation of berberine in *Tinospora cordifolia* and *Tinospora sinensis*

G. V. SRINIVASAN, K. P. UNNIKRISHNAN, A. B. REMA SHREE AND INDIRA BALACHANDRAN 96-99

Parenteral Formulation of Zopiclone

P. V. SWAMY, P. SUSHMA, G. CHIRAG, K. PRASAD, M. YOUNUS ALI AND S. A. RAJU 99-102

Simultaneous Spectrophotometric Determination of Lansoprazole and Domperidone in Capsule Dosage Form

A. P. SHERJE, A. V. KASTURE, K. N. GUJAR AND P. G. YEOLE 102-105

Novel 2-Pyrazoline Derivatives as Potential Antibacterial and Antifungal Agents

SUVARNA KINI AND A. M. GANDHI 105-108

Spectrophotometric Estimation of Ethamsylate and Mefenamic Acid from a Binary Mixture by Dual Wavelength and Simultaneous Equation Methods

ANJU GOYAL AND I. SINGHVI 108-111

Novel Colon Targeted Drug Delivery System Using Natural Polymers

V. RAVI, T. M. PRAMOD KUMAR AND SIDDARAMAIAH 111-113

Effect of Some Clinically Used Proteolytic Enzymes on Inflammation in Rats

A. H. M. VISWANATHA SWAMY AND P. A. PATIL 114-117

Synthesis and Pharmacological Evaluation of (6-Substituted 4-Oxo-4H-chromene-3 yl) methyl N-substituted Aminoacetates

ASMITA GAJBHIYE, V. MALLAREDDY AND G. ACHAI AH 118-120

Development and *In Vitro* Evaluation of Buccoadhesive Tablets of Metoprolol Tartrate

P. D. NAKHAT, A. A. KONDAWAR, L. G. RATHI AND P. G. YEOLE 121-124

RP-HPLC Estimation of Venlafaxine Hydrochloride in Tablet Dosage Forms

S. L. BALDANIA, K. K. BHATT, R. S. MEHTA, D. A. SHAH AND TEJAL R. GANDHI 124-128

Simultaneous Estimation of Esomeprazole and Domperidone by UV Spectrophotometric Method

S. LAKSHMANA PRABU, A. SHIRWAIKAR, ANNIE SHIRWAIKAR, C. DINESH KUMAR, A. JOSEPH AND R. KUMAR 128-131

In Vitro Anthelmintic Activity of *Baliospermum montanum* Muell. Arg roots

R. G. MALI AND R. R. WADEKAR 131-133

REFEREES FOR INDIAN JOURNAL OF PHARMACEUTICAL SCIENCES DURING 2006 & 2007

134-134

Simultaneous Estimation of Esomeprazole and Domperidone by UV Spectrophotometric Method

S. LAKSHMANA PRABU, A. SHIRWAIKAR^{1,*}, ANNIE SHIRWAIKAR², C. DINESH KUMAR², A. JOSEPH³ AND R. KUMAR¹
Department of Pharmaceutical Quality Assurance, ¹Department of Pharmaceutics, ²Department of Pharmacognosy, ³Department of Pharmaceutical Chemistry, Manipal College of Pharmaceutical Sciences, Manipal - 576 104, India

Lakshmana, *et al.*: Simultaneous Estimation of Esomeprazole and Domperidone

A novel, simple, sensitive and rapid spectrophotometric method has been developed for simultaneous estimation of esomeprazole and domperidone. The method involved solving simultaneous equations based on measurement of absorbance at two wavelengths, 301 nm and 284 nm, λ max of esomeprazole and domperidone respectively. Beer's law was obeyed in the concentration range of 5-20 $\mu\text{g/ml}$ and 8-30 $\mu\text{g/ml}$ for esomeprazole and domperidone respectively. The method was found to be precise, accurate, and specific. The proposed method was successfully applied to estimation of esomeprazole and domperidone in combined solid dosage form.

Key words: Esomeprazole, domperidone, λ max, spectrophotometric method

Esomeprazole magnesium trihydrate¹ (ESO) is chemically bis(5-methoxy-2-[(S)-[(4-methoxy-3,5-dimethyl-2-pyridinyl)methyl]sulfinyl]-1H-benzimidazole-1-yl) magnesium trihydrate, a compound that inhibits gastric acid secretion. Esomeprazole is cost effective in the treatment of gastric oesophageal reflux diseases. Esomeprazole is the S-isomer of omeprazole, the first single optical isomer proton pump inhibitor, generally provides better acid control than current racemic proton pump inhibitors and has a favorable pharmacokinetic profile relative to omeprazole². Domperidone³ (DOM)

chemically, [5-chloro-1-[1,3-(2,3-dihydro-2-oxo-1H-benzimidazole-1yl)propyl]-4-piperidinyl-1,3-dihydro-2H-benzimidazole-2-one] is a dopamine antagonist. A detailed survey of literature revealed the estimation of omeprazole by gas chromatographic method⁴, UV spectrophotometric method⁵⁻⁶, TLC⁷ and several HPLC⁸⁻²⁰ methods. Estimation of DOM included spectrophotometric methods²¹⁻²², HPLC²³⁻²⁶ and HPTLC²⁷ in dosage forms. Combination of these two is used for the treatment of gastric esophagus reflux disease. However, no references have been found for simultaneous determination of ESO and DOM in pharmaceutical formulations. A successful attempt has been made to estimate two drugs simultaneously by spectrophotometric analysis.

***For correspondence:**

E-mail: arunshirwaikar@yahoo.co.in

A Shimadzu UV/Vis spectrophotometer, model 1601 (Japan) was employed with spectral bandwidth of 0.1 nm and wavelength accuracy of ± 0.5 nm with automatic wavelength correction with a pair of 3 mm quartz cells. ESO, DOM (obtained as gift samples from Themis Laboratories Pvt. Ltd., Thane), methanol (Merck India Ltd., Mumbai) and distilled water were used in the present study.

Stock solutions (500 $\mu\text{g/ml}$) of ESO and DOM were prepared by dissolving separately 50 mg in 50 ml of methanol in 100 ml volumetric flasks, and the volume was made up to 100 ml with distilled water. The maximum absorbances of ESO and DOM were obtained at 301 nm (λ_1) and 284 nm (λ_2), respectively. ESO and DOM showed linearity with absorbance in the range of 5-20 $\mu\text{g/ml}$ and 8-30 $\mu\text{g/ml}$ at their respective maxima, which were validated by least square method. Coefficients of correlation were found to be 0.9972 for ESO and 0.9986 for DOM. For simultaneous estimation of ESO and DOM, a series of standard solutions in concentration range of 5 to 20 $\mu\text{g/ml}$, were prepared by diluting appropriate volumes of the standard stock solutions. The scanning solutions of ESO and DOM were carried out in the range of 200 to 400 nm against water as blank for obtaining the overlain spectra that are used in the analysis (fig. 1). Absorbance and absorptivities of series of standard solutions were recorded at selected wavelengths λ_1 and λ_2 .

The absorptivity values for ESO and DOM at 284 nm were 243 ± 1.73 and 266 ± 1.80 , respectively. At

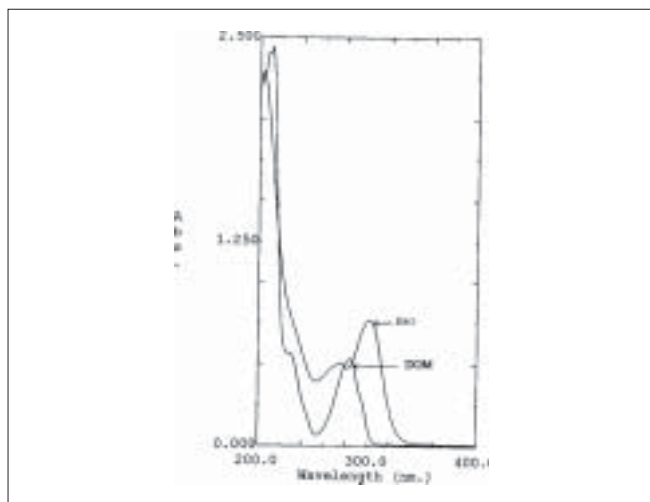


Fig. 1: Overlain spectra of ESO and DOM. Overlain spectra of esomeprazole (ESO) and Domperidone (DOM) in water.

301 nm the absorptivity of ESO and DOM were 383 ± 1.87 and 47 ± 1.73 , respectively. The optical characteristics and regression values for the calibration curve are presented in Table 1. The method employed simultaneous equations using Cramer's rule and matrices ($C_1 = \lambda_2 \varepsilon_2 \times A \lambda_1 - \lambda_1 \varepsilon_2 \times A \lambda_2 / \lambda_1 \varepsilon_1 \times \lambda_2 \varepsilon_2 - \lambda_1 \varepsilon_2 \times \lambda_2 \varepsilon_1$ and $C_2 = \lambda_1 \varepsilon_1 \times A \lambda_2 - \lambda_2 \varepsilon_1 \times A \lambda_1 / \lambda_1 \varepsilon_1 \times \lambda_2 \varepsilon_2 - \lambda_1 \varepsilon_2 \times \lambda_2 \varepsilon_1$). A set of two simultaneous equations was framed using the mean of absorptivity values, given as $A \lambda_1 = 243 C_1 + 266 C_2$ and $A \lambda_2 = 383 C_1 + 47 C_2$, where, C_1 and C_2 are the concentrations of ESO and DOM respectively in simple solution ($\mu\text{g/ml}$). $A \lambda_1$ and $A \lambda_2$ are the absorbances of the sample solutions measured at 284 and 301 nm, respectively.

Twenty capsules were weighed accurately. The average weight was determined and then ground to a fine powder. A quantity equivalent to 30 mg of DOM and 20 mg of ESO were transferred to a 100 ml volumetric flask. The contents were ultrasonicated for 10 min with 50 ml of methanol, made to volume with distilled water. Then the solution was filtered through a Whatman filter paper (No. 40). The filtrate was further diluted with distilled water. The absorbance of the resulting solution was measured at 284 and 301 nm. The result of the analysis of the capsule formulation is presented in Table 2.

To study accuracy, reproducibility and precision of the proposed methods, recovery studies were carried out at three different levels by addition of standard drug solution to preanalysed sample. Results of recovery studies were found to be satisfactory and the results are presented in Table 3.

TABLE 1: REGRESSION AND OPTICAL CHARACTERISTICS OF ESOMEPRAZOLE AND DOMPERIDONE

Parameters	ESO	DOM
Beer's law range	5-20 $\mu\text{g/ml}$	8-30 $\mu\text{g/ml}$
Molar absorptivity (0.001 absorbance unit/mole. cm^3/dm^3)	1.864×10^4	1.133×10^4
Sandell's sensitivity ($\mu\text{g}/\text{cm}^2/0.001$ absorbance unit)	0.0412	0.0376
Regression coefficient (r)	0.9972	0.9986
Slope	0.2038	0.1285
Intercept	0.1729	0.1505

TABLE 2: ANALYSIS OF COMMERCIAL FORMULATION

Brand A		Brand B	
% ESO	% DOM	% ESO	% DOM
99.54 ± 0.89	100.21 ± 0.63	99.92 ± 1.05	99.65 ± 0.77

Brand A: Ignis 20 (Alembic Ltd, Vadodara) and Brand B: Izra - D (Unichem India Ltd, Mumbai) containing 20 mg of Esomeprazole magnesium trihydrate equivalent to 20 mg of esomeprazole and 30 mg of domperidone

TABLE 3: RECOVERY STUDIES

Drug in standard mixture solution ($\mu\text{g/ml}$)		% Recovery \pm SD		Coefficient of variance	
ESO	DOM	ESO	DOM	ESO	DOM
2	2	99.36 \pm 0.144	99.30 \pm 0.261	0.332	0.511
4	4	99.32 \pm 0.271	99.11 \pm 0.447	0.424	0.358
6	6	99.64 \pm 0.355	99.52 \pm 0.591	0.297	0.493

SD stands for standard deviation, the results are mean of three readings ($n = 3$)

The proposed method for simultaneous estimation of ESO and DOM in combined sample solutions was found to be simple, accurate and reproducible. Beer's law was obeyed in the concentration range of 5-20 $\mu\text{g/ml}$ and 8-30 $\mu\text{g/ml}$ for esomeprazole and domperidone respectively. Co-efficient of variation was found to be 0.9972 and 0.9986 for ESO and DOM, respectively. The percentage recoveries were found to be in the range of 99.32 to 99.64% and 99.11 to 99.42% for ESO and DOM, respectively. Once the equations are determined, analysis requires only the measuring of the absorbance of the sample solution at two wavelengths selected, followed by a few simple calculations. It is a new and novel method and can be employed for routine analysis in quality control laboratories.

ACKNOWLEDGEMENTS

The authors thank Themis Laboratories Pvt. Ltd., Thane, for supplying gift samples of Esomeprazole and Domperidone to carry out this work.

REFERENCES

- Andersson T, Hassan-Alin M, Hasselgren G, Rohss K, Weidolf L. Pharmacokinetic studies with Esomeprazole, the (S)-Isomer of omeprazole. *Clinical Pharmacokinetics* 2001;40:411-26.
- Scott LJ, Dunn CJ, Mallarkey G, Sharpe M. Esomeprazole- A review of its use in the management of acid-related disorders. *Drugs* 2002;62:1503-38.
- British Pharmacopoeia, Vol.1, London: Her Majesty's Stationary Office; 1993. p. 519.
- Petersen KU, Schmutzler W. Proton pump inhibitors release of active substance from various preparation. *Detsche Apotheker Zeitung* 1999;139:68-9.
- Castro D, Moreno MA, Torrado S, Lastres JL. Comparison of derivative spectrophotometric and liquid chromatographic methods for the determination of omeprazole in aqueous solution during stability studies. *J Pharm Biomed Anal* 1999;21:291-8.
- Ozaltin N, Kocer A. Determination of omeprazole in pharmaceuticals by derivative spectroscopy. *J Pharm Biomed Anal* 1997;16:337-42.
- Dogrukol AK, Tunalier Z, Tuncel M. TLC densitometric determination of omeprazole in pharmaceutical preparations. *Pharmazie* 1998;53:272-3.
- Sluggett GW, Stong JD, Adams JH, Zhao Z. Omeprazole determination using HPLC with coulometric detection. *J Pharm Biomed Anal* 2001;25:357-61.
- Mathew M, Gupta VD, Bailery RE. Stability of omeprazole solutions at various pH values as determined by high performance liquid chromatography. *Drug Develop Ind Pharm* 1998;21:965-71.
- Ding L, Yang J, Yan HL, Zhang ZX, An DK. Determination of omeprazole and its pharmacokinetic in human plasma by an improved HPLC method. *Chinese J Pharm Anal* 1999;17:458-61.
- Shim SH, Bok SJ, Kwon KI. Determination of omeprazole in rat plasma by HPLC with column switching. *Arch Pharm Res* 1994;17:458-61.
- Zhi XJ, Hunang J, Zhang JH, Wang HT, Zhang LL. Determination of omeprazole and its metabolites in plasma by RP-HPLC. *Chinese J Pharm* 1999;30:166-8.
- Motevalian M, Saeedi G, Keyhanfar F, Tayebi L, Mahmoudian M. Simultaneous determination of omeprazole and its metabolites in human plasma by HPLC using solid phase extraction. *Pharm Pharmacol Commun* 1999;5:265-8.
- Yeung PK, Little R, Jiang YQ, Buckley SJ, Veldhuyzen SJ, Zanten VN. Simple high performance liquid chromatography assay for simultaneous determination of omeprazole and metronidazole in human plasma and gastric fluid. *J Pharm Biomed Anal* 1998;17:1393-8.
- Kobayashi K, Chiba KO, Sohn DR, Kato Y, Ishizaki T. Simultaneous determination of omeprazole and its metabolites in plasma and urine by reversed phase high performance liquid chromatography with an alkaline resistant polymer coated C18 column. *J Chromatogr B* 1992;117:299-305.
- Amantea MA, Narang PK. Improved procedure for quantization of omeprazole and metabolites using reversed phase high performance liquid chromatography. *J Chromatogr A* 1988;426:216-22.
- Hassan-Alin M, Andersson T, Bredberg E, Rohss K. Pharmacokinetics of esomeprazole after oral and intravenous administration of single and repeated doses to healthy subjects. *Eur J Clin Pharmacol* 2000;56-1:665-70.
- Johnson DA, Roach AC, Carlsson AS, Karlsson AA, Behr DE. Stability of esomeprazole capsule contents after in vitro suspension in common soft foods and beverages. *Pharmacotherapy* 2003;23:731-4.
- Li XQ, Anderson TB, Ahlstrom M, Weidolf L. Comparison of inhibitory effects of the proton pump-inhibiting drugs omeprazole, esomeprazole, lansoprazole, pantoprazole, and rabeprazole on human cytochrome P450 activities *Drug Metab Dispos* 2004;32:821-7.
- Shetty R, Subramanian G, Ranjith Kumar A, Pandey S, Udupa N. Estimation of esomeprazole in human plasma by reverse phase high performance liquid chromatography. *Indian Drugs* 2005;42:158-61.
- Al Khamis KL, Hagga ME, Al-Khamis HA. Spectrophotometric determination of domperidone using absorbance difference method. *Anal Lett* 1990;23:451-60.
- Ramamohan Y, Avadhanulu AB. Extractive spectrophotometric determination of domperidone in its pharmaceutical dosage forms. *Indian Drugs* 1998;35:754-6.
- Yamamoto K, Hagino M, Kotaki H, Iga I. Quantitative determination of domperidone in rat plasma by high performance liquid chromatography with fluorescence detection. *J Chromatogr B Biomed Appl* 1998;720:252-5.
- Argekar AP, Shah SJ. Simultaneous determination of cinnarizine and domperidone maleate from tablet dosage form by reverse phase ion pair high performance liquid chromatography. *J Pharm Biomed Anal* 1999;19:813-7.
- Zarapkar SS, Kanyawar NS. Simultaneous estimation of domperidone and omeprazole in pharmaceutical dosage by reverse phase high performance liquid chromatography. *Indian Drugs* 2002;39:217-21.

26. Kobylinska M, Kobylinska K. High-performance liquid chromatographic analysis for the determination of domperidone in human plasma. *J Chromatogr B Biomed Sci Appl* 2000;744:207-12.
27. Zarpakar SS, Salunkhe BB. Determination of domperidone by high performance thinlayer chromatography in pharmaceutical preparations. *Indian Drugs* 1990;27:537-40.

Accepted 14 February 2008

Revised 10 September 2007

Received 15 March 2007

Indian J. Pharm. Sci., 2008, 70 (1): 128-131
